



Assembly Instructions

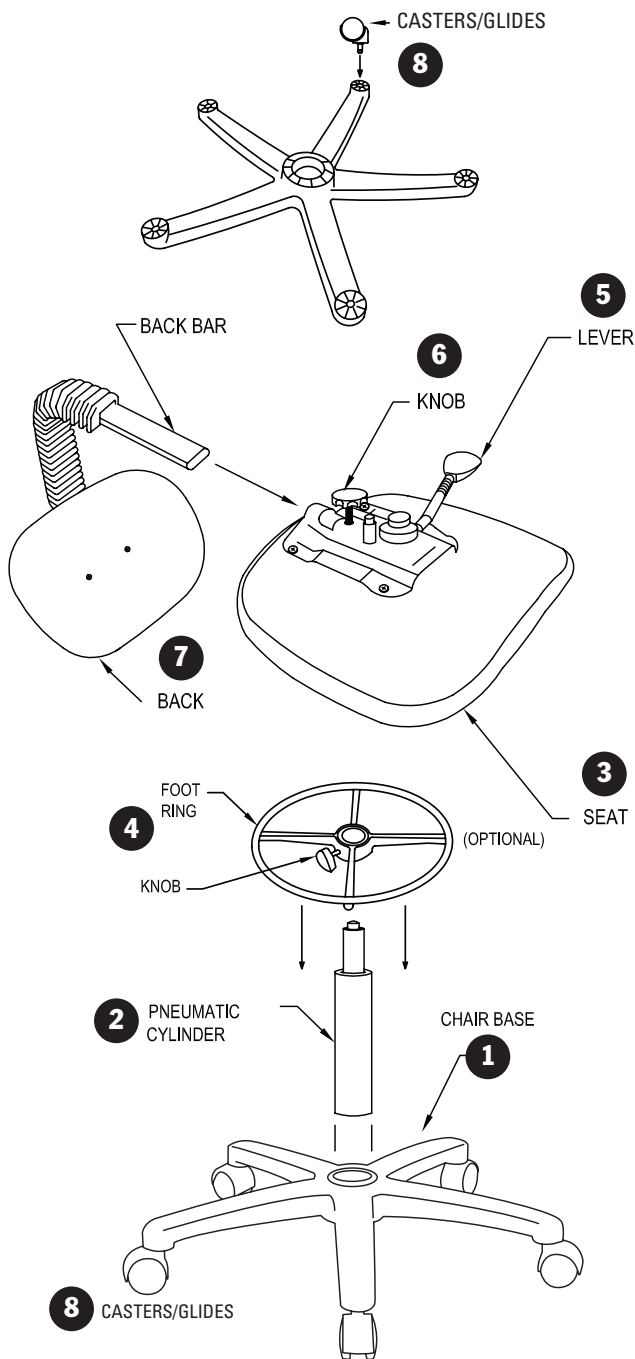


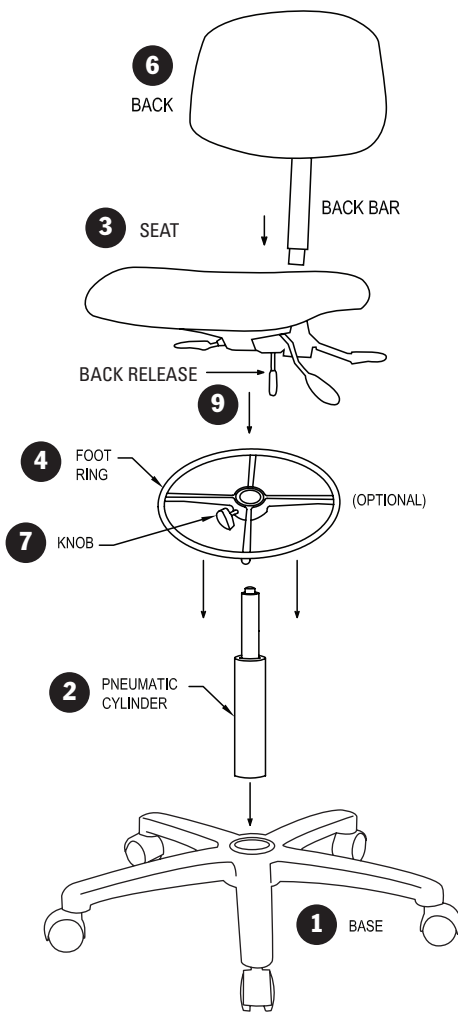
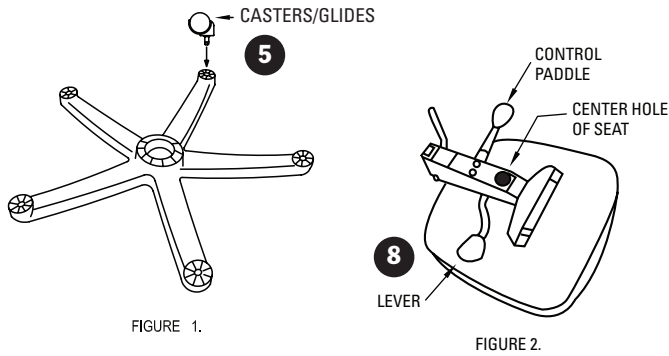
figure 1

- 1) Remove base, back/back bar, pneumatic cylinder, casters/glides, and seat from box.
- 2) Put casters or glides on base. Use pressure to push in (8).
- 3) Slide **optional** foot ring (4) over pneumatic cylinder from bottom (2) about halfway up the cylinder and tighten knob (7).
- 4) Place base with legs on hard level surface (1).
- 5) Insert pneumatic cylinder as shown in (2) into center hole of base and lightly push down. Adjust foot ring to desired height.
- 6) Turn seat upside down to assemble back. It may be helpful to lay the seat on the edge of a table to slide the back bar into position.
- 7) Loosen knob (6) counter clockwise slightly to allow the back bar to slide into the control mechanism on the seat. Push in until you hear it click. Then tighten by turning knob (6) clockwise, do not overtighten.
- 8) Turn seat and back over and align the center hole on the bottom of the seat with the top of the pneumatic cylinder and lightly push down. With the weight of your body, carefully sit on the seat. This will press the base, pneumatic cylinder, and seat together.
- 9) To raise the height of your chair simply pull up on lever (5) while not seated.
- 10) To lower the height of your chair, while seated on chair, pull up on lever (5).

In/Out and Up/Down back adjustments not available on all options.



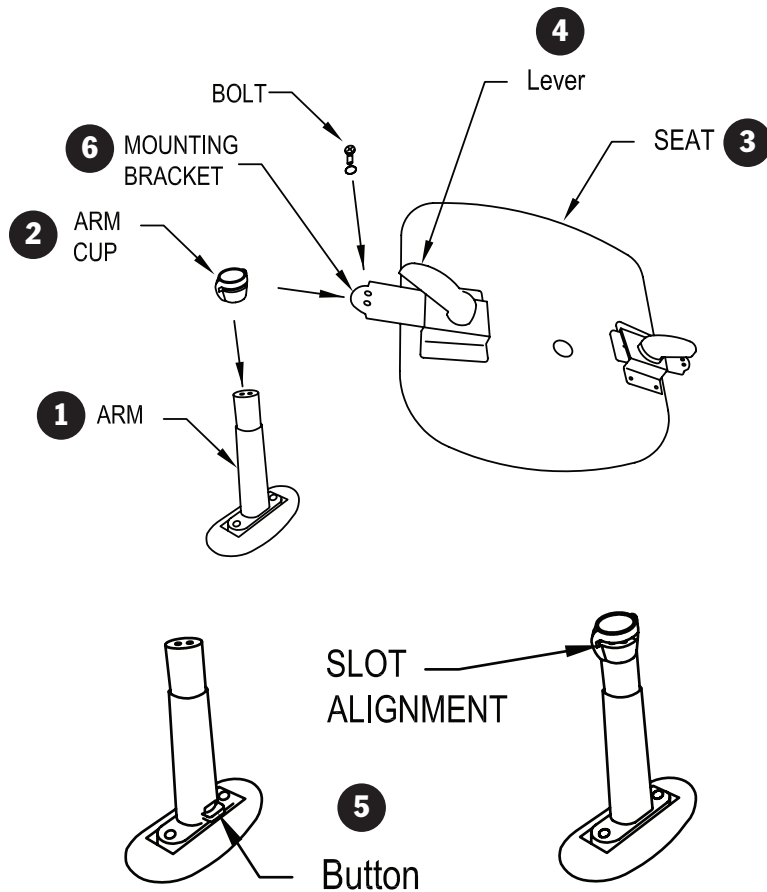
Assembly Instructions



- 1) Remove base, back/back bar, pneumatic cylinder, seat, foot ring (if included) and casters/glides from box.
- 2) Place base (1) upside down and insert casters/glides (5) (see figure 1).
- 3) Slide **optional** foot ring (4) over pneumatic cylinder from bottom (2) about halfway up the cylinder and tighten knob (7).
- 4) Flip the base so casters/glides are on the floor and insert pneumatic cylinder (2) as shown in (figure 3) into center hole of base with colored button up. Lightly push down. Adjust foot ring to desired height.
- 5) Align the center hole of the underside of the seat assembly (3) with the top of the pneumatic cylinder (2) and lightly push down. Kneel on the seat to hold it together. This will press the base, pneumatic cylinder and seat together. (Underside of the seat is shown in Figure 2)
- 6) On the chair back bar, depress the spring loaded button with your finger, lift the back release. (DO NOT PUSH THE BAR ALL THE WAY THROUGH AT THIS TIME.)
- 7) Now, push the bar down until it protrudes at least 1" below the channel. (You should hear the spring-loaded button click open as it comes out the bottom of the channel). Adjust the height of the seat back for comfort and push the back release down to lock the bar in place.
- 8) Adjust the seat back to the desired angle using the control lever located on the side of the seat. You can adjust the height of the back by lifting the back release up. Push the back release(9) down to lock the bar in place.
- 9) To raise the height of your chair, take your weight off of the chair and pull up on the lever (8) on the underside of the seat and adjust.
- 10) To lower the height of your chair you must be seated with your weight on the seat, lift up on lever (8).



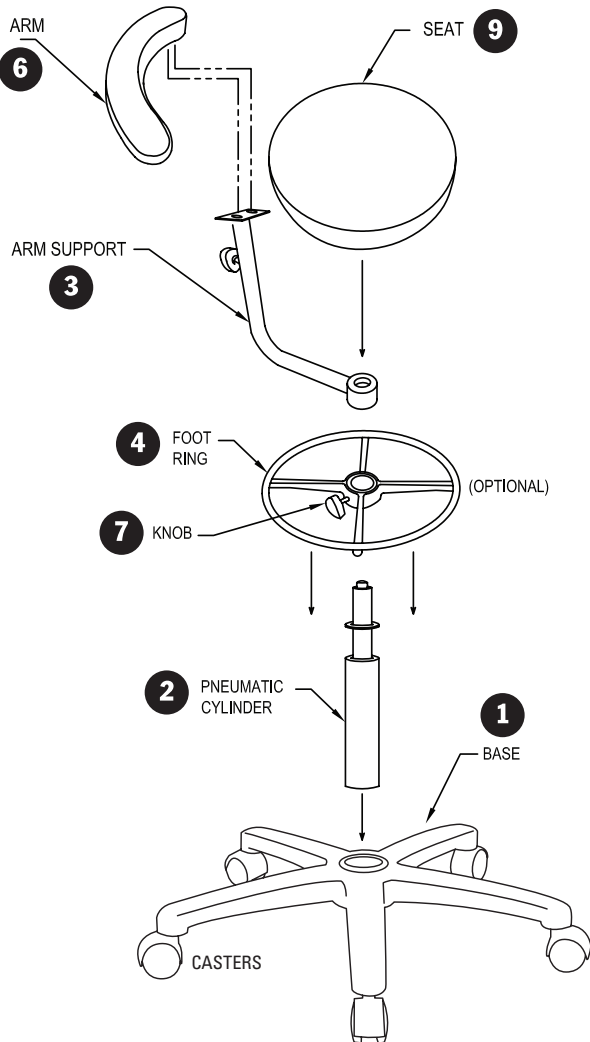
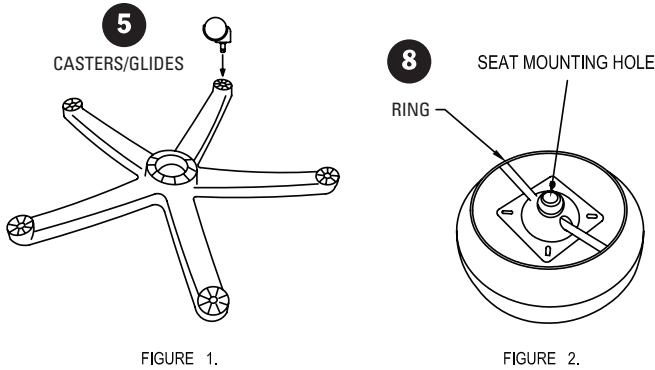
Assembly Instructions



- 1) Remove the two bolts from the (1) arm.
- 2) Align the open slot of the (2) arm cup so that it is even with the bottom of the cylinder of (1) arm.
- 3) With the (3) seat upside down, align the slot of the (2) arm cup with the (6) mounting bracket. Attach with the two bolts. (Note: Make sure that the (5) button is facing away from the (3) seat.) Repeat steps for opposite side.
- 4) You can adjust the arms in and out by loosening (4) lever and sliding the arm in or out. When adjusted to desired location, tighten (4) lever.
- 5) You can adjust the arms up or down by pulling up on (5) button, adjust to desired height and then release (5) button.



Assembly Instructions

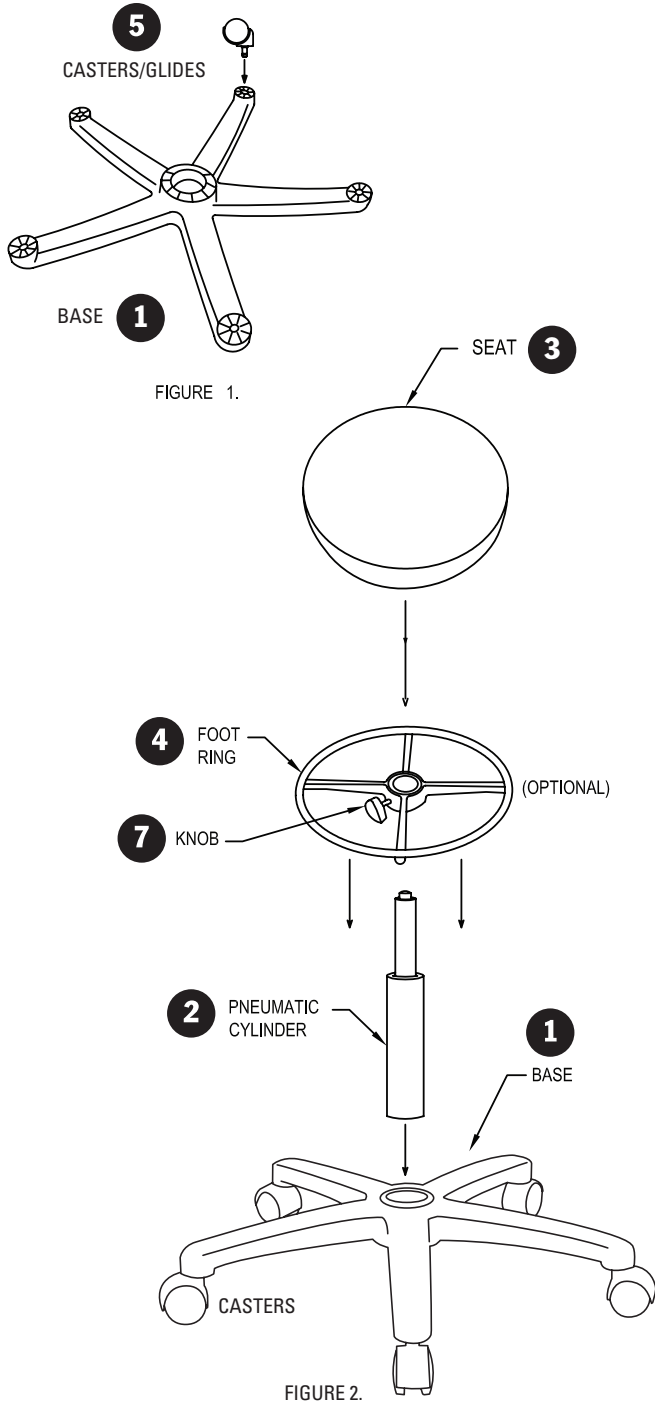


- 1) Remove arm, base, pneumatic cylinder, seat, foot ring (optional), and casters/glides from box.
- 2) Place base (1) upside down and insert casters/glides (5) (see figure 1). Flip base over once casters/glides have been inserted.
- 3) Slide **optional** foot ring (4) over pneumatic cylinder from bottom (2) about halfway up the cylinder and tighten knob (7).
- 4) Insert pneumatic cylinder (2) as shown in (figure 3) into center hole of base with colored button up and lightly push down. Adjust foot ring to desired height
- 5) Align the two holes on the bottom of (6) arm with the two holes on the bracket on (3) arm support and secure with the two shoulder bolts and washers supplied. (Note: There are two holes on both ends of (3) arm for the option of either being on the right side or left side)
- 6) Align center hole of (3) arm support with (2) pneumatic cylinder and slide down.
- 7) Align the center hole of seat (9) on the bottom of the seat (see figure 2) with the top of the pneumatic cylinder (2) and lightly push down. With the weight of your body, carefully sit on the seat. This will press the base, pneumatic cylinder, and seat together.
- 8) To raise the height of your chair simply pull up on ring (8) while not seated.
- 9) To lower the height of your chair, while seated on chair, pull up on ring (8).

Note: 2mm allen wrench to adjust pneumatic cylinder ring.



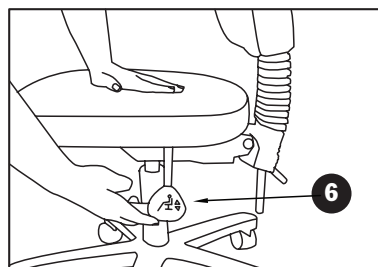
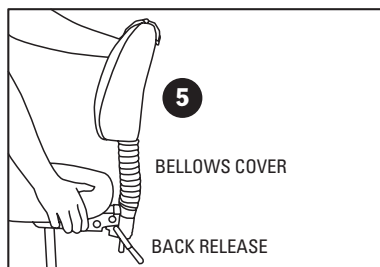
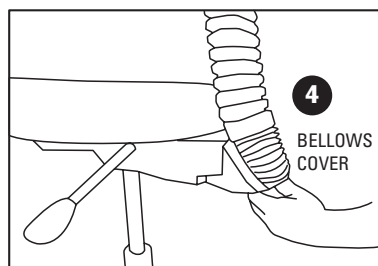
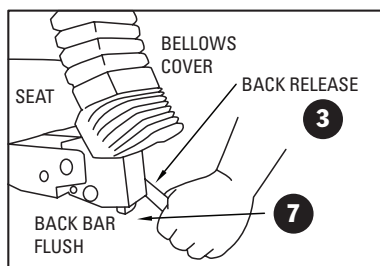
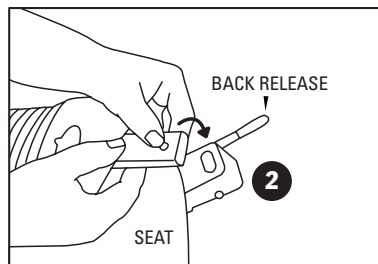
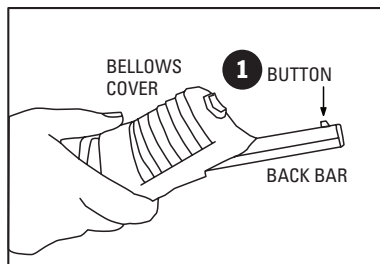
Assembly Instructions



- 1) Remove base, pneumatic cylinder, seat, foot ring (if included) and caster/glides from box.
- 2) Place base (1) upside down and insert casters/glides (5) (see figure 1).
- 3) Slide **optional** foot ring (4) over pneumatic cylinder from bottom (2) about halfway up the cylinder and tighten knob (7).
- 4) Flip the base so casters/glides are on the floor and insert pneumatic cylinder (2) as shown in (figure 2) into center hole of base with colored button up. Lightly push down. Adjust foot ring to desired height
- 5) Align the center hole of the underside of the seat assembly (3) with the top of the pneumatic cylinder (2) and lightly push down. With the weight of your body carefully sit on the seat. This will press the base, pneumatic cylinder, and seat together.
- 6) To raise the height of your stool, take your weight off of the stool and pull on the ring on the underside of the seat and adjust.
- 7) To lower the height of your stool you must be seated with your weight on the seat - lift up on the ring.



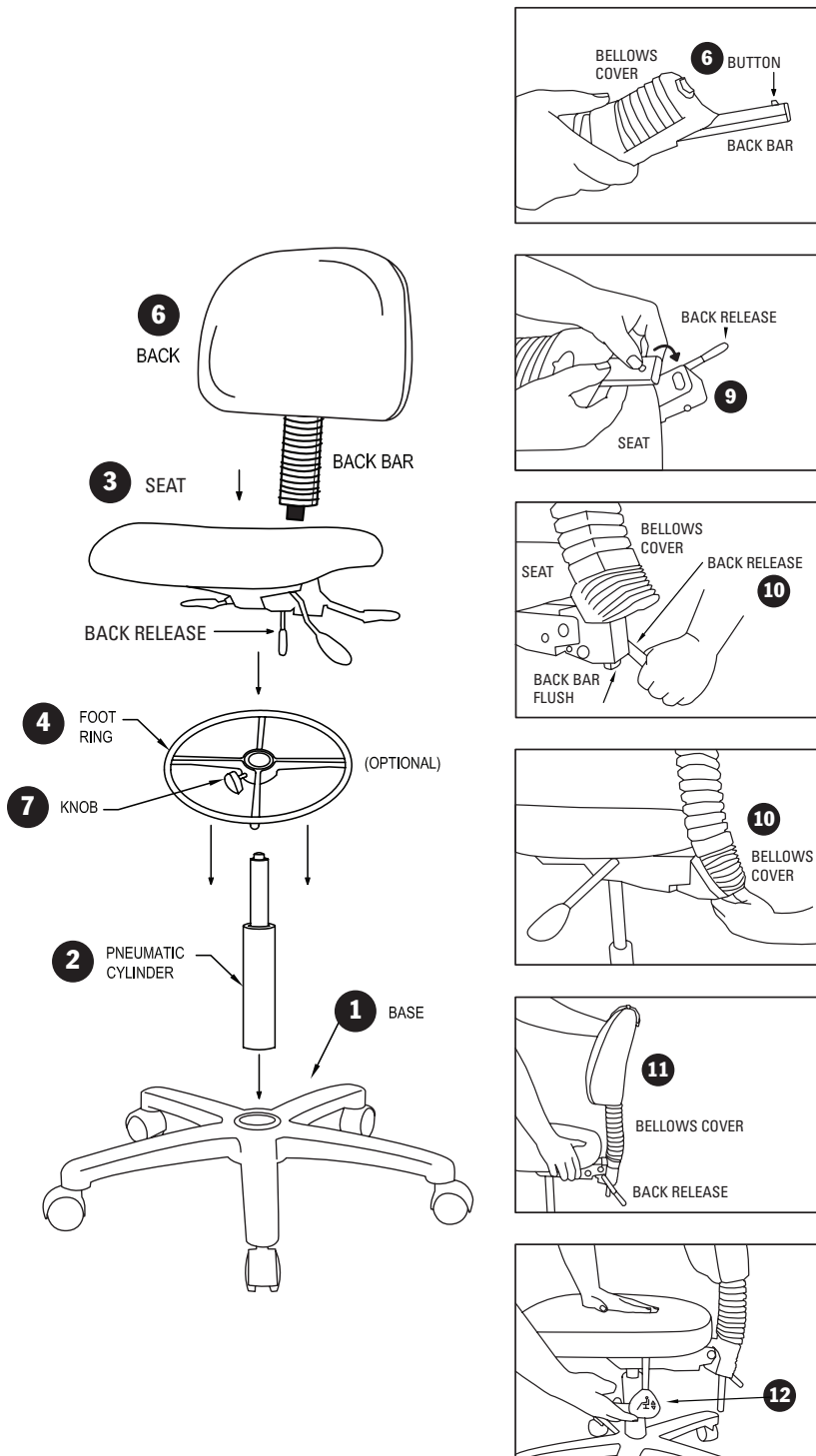
Assembly Instructions



- 1) Remove back and chair from carton.
- 2) Make sure black plastic bellows cover is pulled back so that the spring-loaded button is unobstructed.
- 3) On the chair back bar, depress the spring-loaded button with your finger, lift the back release and insert the bar into the control channel. **(Do not push the bar all the way through at this time.)**
- 4) Now, push the bar down until it is flush with the bottom of the channel opening. Lock Back Release (3). Grasp the plastic bellows and pull it over the bottom of the channel, lining up the bellow opening and the back bar. Unlock the Back Release (3) and continue pushing the back down until the **bar protrudes at least 1" below the channel (7)**. (You should hear the spring-loaded button click open as it comes out of the bottom of the channel). Adjust the height of the seat back for comfort and push the back release down to lock the bar in place.
- 5) Adjust the seat back to the desired angle using the back release located on the side of the seat.
- 6) Adjust the height of the seat cushion to the desired position using the back release located on the side of the seat.



Assembly Instructions



- 1) Remove base, back/back bar, pneumatic cylinder packaging, seat, optional foot ring, and casters/glides from box.
- 2) Slide **optional** foot ring (4) over bottom pneumatic cylinder (2) and tighten knob about halfway (7).
- 3) Insert pneumatic cylinder (2) into center hole of base with colored button up and lightly push down.
- 4) Align the center hole of the underside of the seat assembly (3) with the top of the pneumatic cylinder (2) and lightly push down. Kneel on the seat to hold it together. This will press the base, pneumatic cylinder and seat together.
- 5) To assemble back, make sure black plastic bellows cover is pulled back so that the spring-loaded button is unobstructed.
- 6) On the chair back bar, depress the spring loaded button (9) with your finger, lift the back release. (**DO NOT PUSH THE BAR ALL THE WAY THROUGH AT THIS TIME.**)
- 7) Now, push the bar down until it is flush with the bottom of the channel opening. Lock Back Release (3). Grasp the plastic bellows cover and pull it over the bottom of the channel, lining up the bellow opening and the back bar. Unlock the Back Release and continue pushing the back down until the **bar protrudes at least 1" below the channel (10)**. (You should hear the spring-loaded button click open as it comes out of the bottom of the channel). Adjust the height of the seat back for comfort and push the Back Release down to lock the bar in place.
- 8) Adjust the seat back to the desired angle using the back adjustment lever located on the side on the seat (11).
- 9) Adjust the height of the seat cushion to the desired position using the height adjustment lever on the left side of the seat (12).